

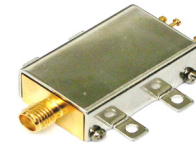
Coaxial Voltage Controlled Oscillator

ZX95-1700W+ ZX95-1700W

Linear Tuning 770 to 1700 MHz

Features

- Wide Bandwidth 770 to 1700 MHz
- High Power Output, +9 dBm typ.
- Linear Tuning
- Low Phase Noise
- Low Pushing
- Protected by US Patent 6,790,049



CASE STYLE: GB956

Applications

- R & D
- Lab
- Instrumentation
- Test Equipment

Connectors	Model	Price	Qty.
SMA	ZX95-1700W-S+	\$49.95 ea.	(1-9)
SMA	ZX95-1700W-S	\$49.95 ea.	(1-9)

+ RoHS compliant in accordance with EU Directive (2002/95/EC)

The +Suffix identifies RoHS Compliance. See our web site for RoHS Compliance methodologies and qualifications.

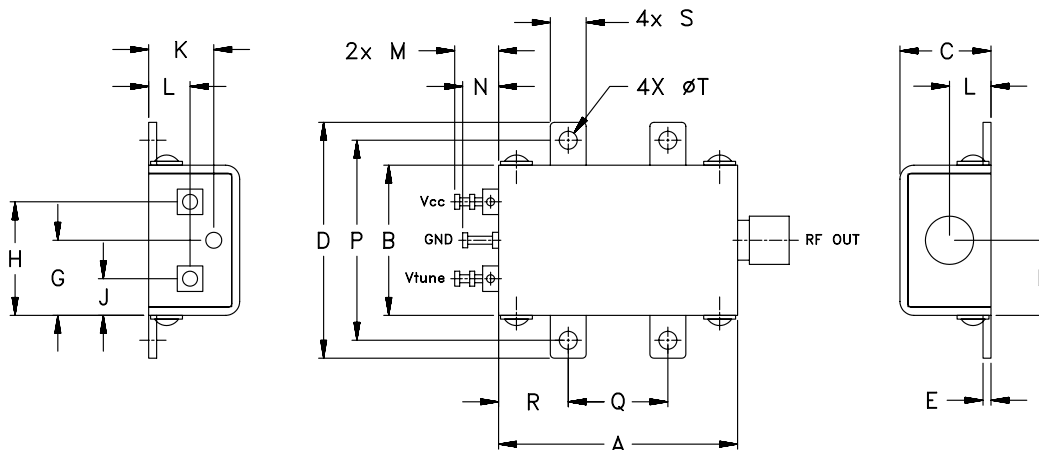
Electrical Specifications

MODEL NO.	FREQ. (MHz)		POWER OUTPUT (dBm)	PHASE NOISE dBc/Hz SSB at offset frequencies, kHz				TUNING					NON HARMONIC SPURIOUS (dBc)	HARMONICS (dBc)			PULLING pk-pk @ 12 dBc (MHz)	PUSHING (MHz/V)	DC OPERATING POWER	
	Min.	Max.		Typ.	1	10	100	1000	VOLTAGE RANGE (V)	SENSI- TIVITY (MHz/V)	PORT CAP (pF)	3 dB MODULATION BANDWIDTH (MHz)		Typ.	Typ.	Max.			Typ.	Typ.
ZX95-1700W(+)	770	1700	+9	-74	-100	-121	-143	1	24	30 - 60	210	20	-90	-25	-14	7	0.5	12	35	

Maximum Ratings

Operating Temperature	-55°C to 85°C
Storage Temperature	-55°C to 100°C
Absolute Max. Supply Voltage (Vcc)	15V
Absolute Max. Tuning Voltage (Vtune)	30V
All specifications	50 ohm system

Outline Drawing



Outline Dimensions (inch/mm)

A	B	C	D	E	F	G	H	J	K	L	M	N	P	Q	R	S	T	wt.
1.20	.75	.46	1.18	.04	.38	.45	.57	.18	.33	.21	.22	.18	1.00	.50	.35	.18	.09	grams
30.48	19.05	11.68	29.97	1.02	9.65	11.43	14.48	4.57	8.38	5.33	5.59	4.57	25.40	12.70	8.89	4.57	2.29	35.0



P.O. Box 350166, Brooklyn, New York 11235-0003 (718) 934-4500 Fax (718) 332-4661 For detailed performance specs & shopping online see Mini-Circuits web site



The Design Engineers Search Engine Provides ACTUAL Data Instantly From MINI-CIRCUITS At: www.minicircuits.com

RF/IF MICROWAVE COMPONENTS

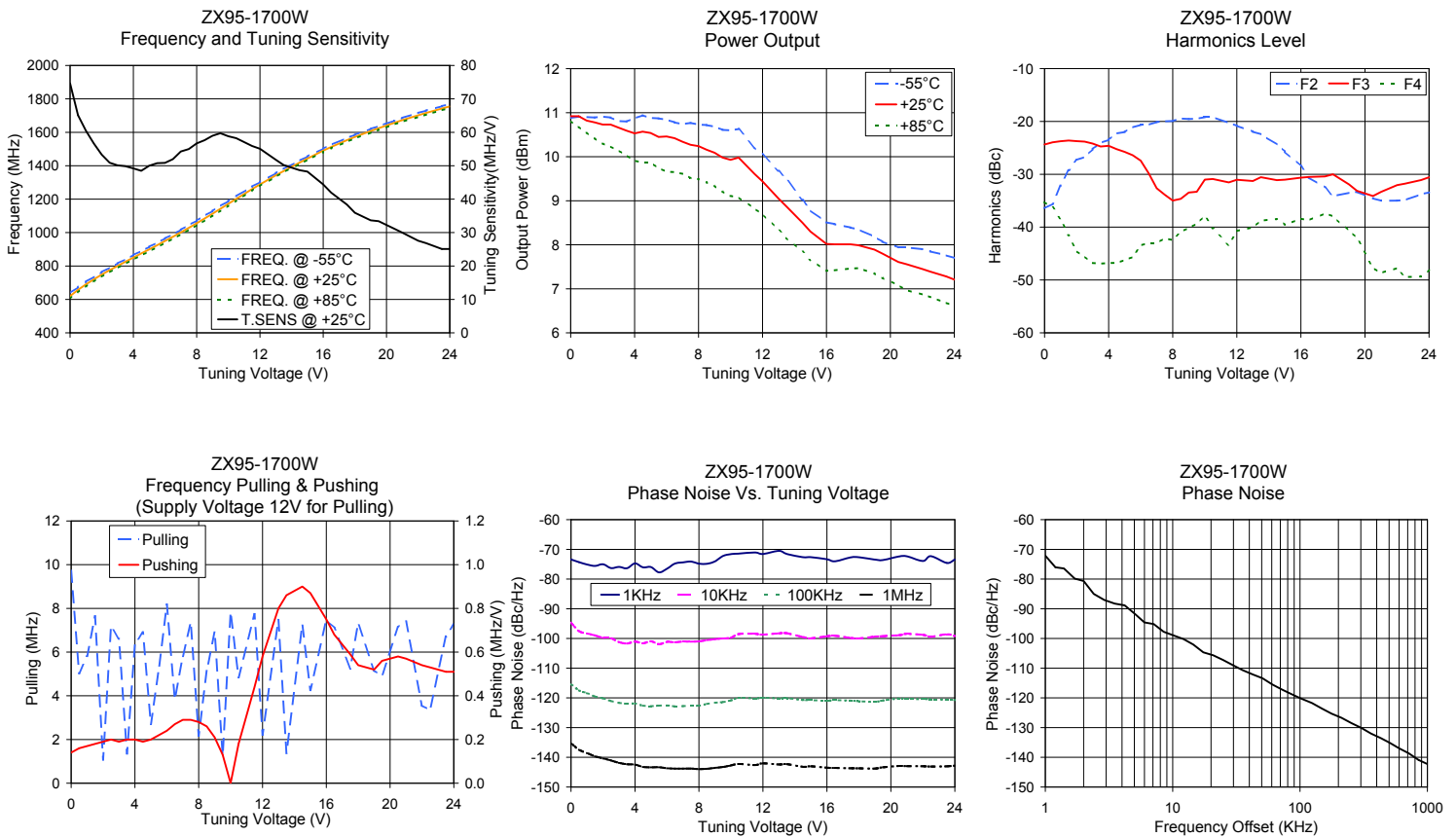
REV. A
M98898
EDR-6295
ZX95-1700W
RAV/URJ
070604
page 1 of 2

Performance Data & Curves*

ZX95-1700W+ ZX95-1700W

V TUNE	TUNE SENS (MHz/V)	FREQUENCY (MHz)			POWER OUTPUT (dBm)			Icc (mA)	HARMONICS (dBc)			FREQ. PUSH (MHz/V)	FREQ. PULL (MHz)	PHASE NOISE (dBc/Hz) at offsets				FREQ OFFSET (KHz)	PHASE NOISE at 1235 MHz (dBc/Hz)
		-55°C	+25°C	+85°C	-55°C	+25°C	+85°C		F2	F3	F4			1KHz	10KHz	100KHz	1MHz		
0.00	74.67	637.9	619.9	604.0	10.88	10.92	10.81	27.13	-36.4	-24.4	-35.3	0.14	9.72	-73.4	-94.7	-115.4	-135.2	1.0	-72.10
0.50	65.12	673.5	657.2	642.8	10.91	10.92	10.68	27.16	-35.6	-24.0	-36.2	0.16	5.03	-74.3	-97.5	-117.5	-137.5	2.0	-80.65
1.00	60.49	705.7	689.8	676.1	10.90	10.82	10.55	27.17	-32.1	-23.8	-38.5	0.17	5.81	-75.1	-98.3	-118.4	-138.5	3.5	-88.26
2.00	53.33	763.6	748.3	735.3	10.91	10.73	10.30	27.21	-27.3	-23.7	-44.6	0.19	1.08	-75.0	-99.8	-120.2	-140.4	5.0	-91.55
3.00	50.10	814.9	800.5	788.2	10.81	10.66	10.14	27.25	-25.2	-24.2	-46.8	0.19	6.61	-75.9	-101.2	-121.7	-141.9	8.5	-97.75
4.00	49.21	865.4	850.4	838.3	10.87	10.53	9.91	27.30	-23.5	-24.6	-46.8	0.20	6.38	-74.7	-101.1	-121.9	-142.5	10.0	-98.88
5.00	49.99	914.3	899.3	887.5	10.88	10.54	9.87	27.35	-22.0	-25.8	-46.2	0.20	2.71	-76.0	-100.9	-122.8	-143.4	20.8	-105.65
6.00	50.87	964.6	949.7	937.7	10.84	10.46	9.66	27.41	-20.6	-27.4	-43.4	0.24	8.17	-76.5	-101.1	-122.5	-143.7	35.5	-110.70
7.00	54.27	1016.5	1001.1	989.4	10.74	10.34	9.61	27.48	-20.1	-32.7	-43.0	0.29	5.80	-74.4	-101.0	-122.8	-143.8	50.7	-113.39
8.00	56.68	1071.6	1055.7	1044.1	10.73	10.24	9.49	27.55	-19.9	-35.0	-42.5	0.28	2.17	-74.8	-101.0	-122.6	-144.0	86.7	-118.85
10.00	58.81	1188.5	1172.2	1161.1	10.60	9.93	9.11	27.64	-19.2	-31.0	-37.9	0.00	7.81	-71.6	-99.8	-120.9	-142.7	100.0	-120.07
12.00	55.08	1302.0	1288.0	1278.8	10.05	9.44	8.70	27.69	-20.8	-31.0	-40.7	0.58	2.22	-71.6	-98.7	-120.0	-142.0	148.1	-123.56
13.00	51.80	1355.6	1342.5	1334.0	9.68	9.05	8.34	27.65	-21.9	-31.3	-40.0	0.80	7.47	-70.5	-98.3	-120.2	-142.4	211.6	-126.70
15.00	48.25	1454.7	1442.8	1434.7	8.78	8.30	7.66	27.51	-25.7	-31.0	-39.6	0.87	4.26	-72.6	-99.9	-120.8	-143.0	361.5	-132.03
16.00	44.40	1502.5	1490.2	1481.6	8.51	8.02	7.41	27.49	-28.5	-30.6	-38.4	0.75	7.47	-73.4	-99.3	-120.9	-143.5	432.2	-133.56
18.00	35.91	1585.5	1572.5	1563.0	8.35	7.99	7.47	27.58	-34.2	-30.0	-38.0	0.54	7.31	-72.7	-100.0	-121.1	-143.7	507.5	-135.14
19.00	33.67	1620.1	1607.5	1598.4	8.18	7.89	7.35	27.59	-33.5	-31.9	-40.7	0.52	5.16	-73.4	-99.4	-121.3	-143.8	600.0	-136.98
21.00	29.98	1686.0	1672.7	1663.1	7.94	7.56	6.97	27.56	-35.0	-33.3	-48.7	0.57	7.41	-72.4	-98.5	-120.4	-143.0	712.4	-138.63
22.00	27.56	1715.6	1702.0	1692.2	7.90	7.45	6.87	27.56	-35.0	-32.1	-47.7	0.54	3.56	-73.9	-98.8	-120.4	-143.0	851.6	-140.87
24.00	25.09	1768.9	1754.8	1744.5	7.70	7.21	6.62	27.53	-33.4	-30.6	-48.1	0.51	7.27	-73.4	-99.2	-120.7	-142.8	1000.0	-142.28

*at 25°C unless mentioned otherwise



P.O. Box 350166, Brooklyn, New York 11235-0003 (718) 934-4500 Fax (718) 332-4661 For detailed performance specs & shopping online see Mini-Circuits web site



The Design Engineers Search Engine Provides ACTUAL Data Instantly From MINI-CIRCUITS At: www.minicircuits.com

RF/IF MICROWAVE COMPONENTS